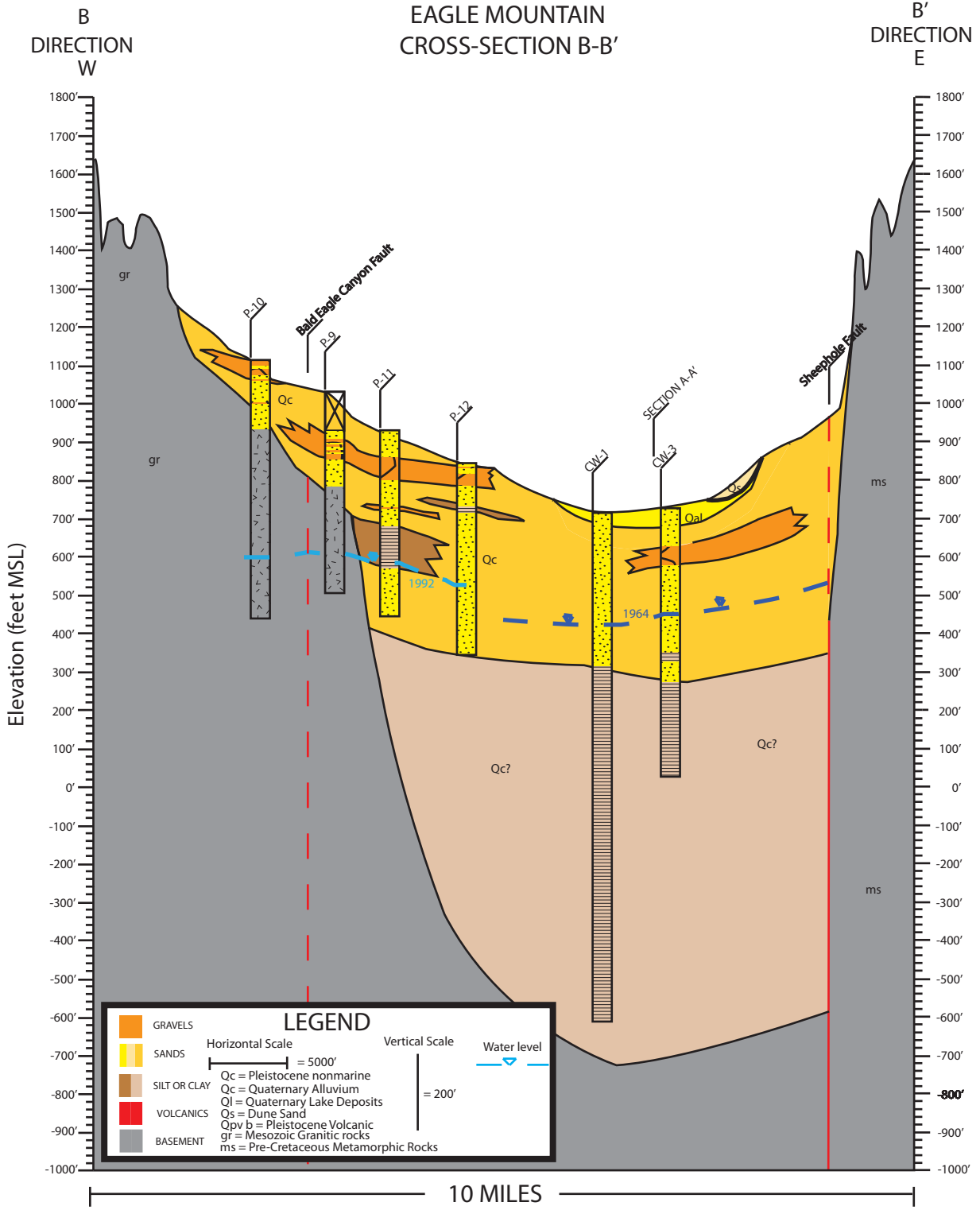


| LEGEND | |
|---------------------------------------|------------------------------|
| | GRAVELS |
| | SANDS |
| | SILT OR CLAY |
| | VOLCANICS |
| | BASEMENT |
| Qc = Pleistocene nonmarine | Qc = Quaternary Alluvium |
| Ql = Quaternary Lake Deposits | Qs = Dune Sand |
| Qpv b = Pleistocene Volcanic | gr = Mesozoic Granitic rocks |
| ms = Pre-Cretaceous Metamorphic Rocks | |
| Water level | Vertical Scale = 200' |
| Horizontal Scale | = 5000' |

| | | |
|---|---|--|
| EAGLE MOUNTAIN PUMPED STORAGE EAGLE MOUNTAIN, CALIFORNIA | GEI Consultants Bookman-Edmiston Division | CROSS-SECTION A - A' JUNE 2008 FIGURE E2-4 |
| EAGLE CREST ENERGY COMPANY | | |



EAGLE MOUNTAIN PUMPED STORAGE
EAGLE MOUNTAIN, CALIFORNIA

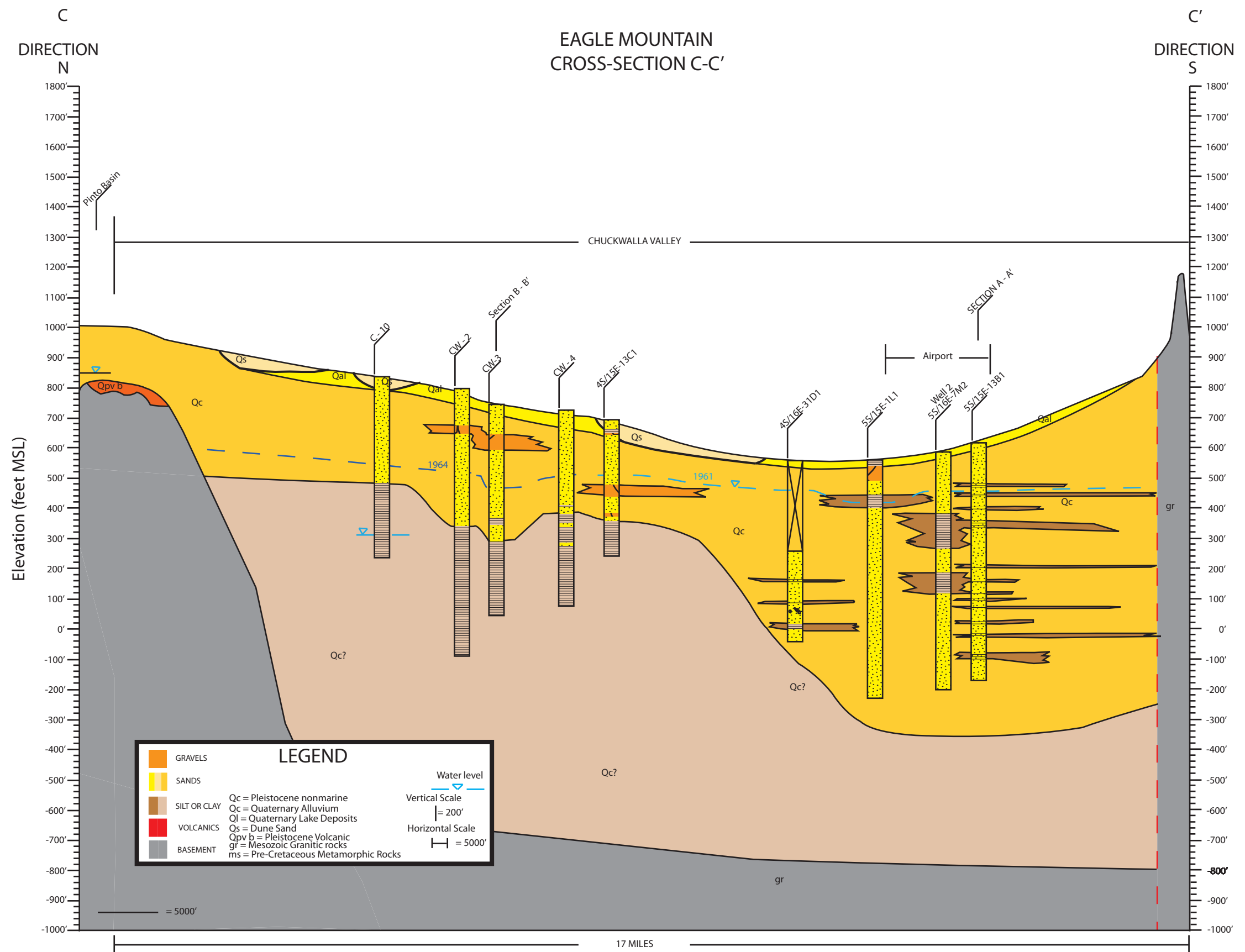
EAGLE CREST ENERGY COMPANY



CROSS-SECTION B - B'

JUNE 2008

FIGURE E2-5



EAGLE MOUNTAIN PUMPED STORAGE
EAGLE MOUNTAIN, CALIFORNIA

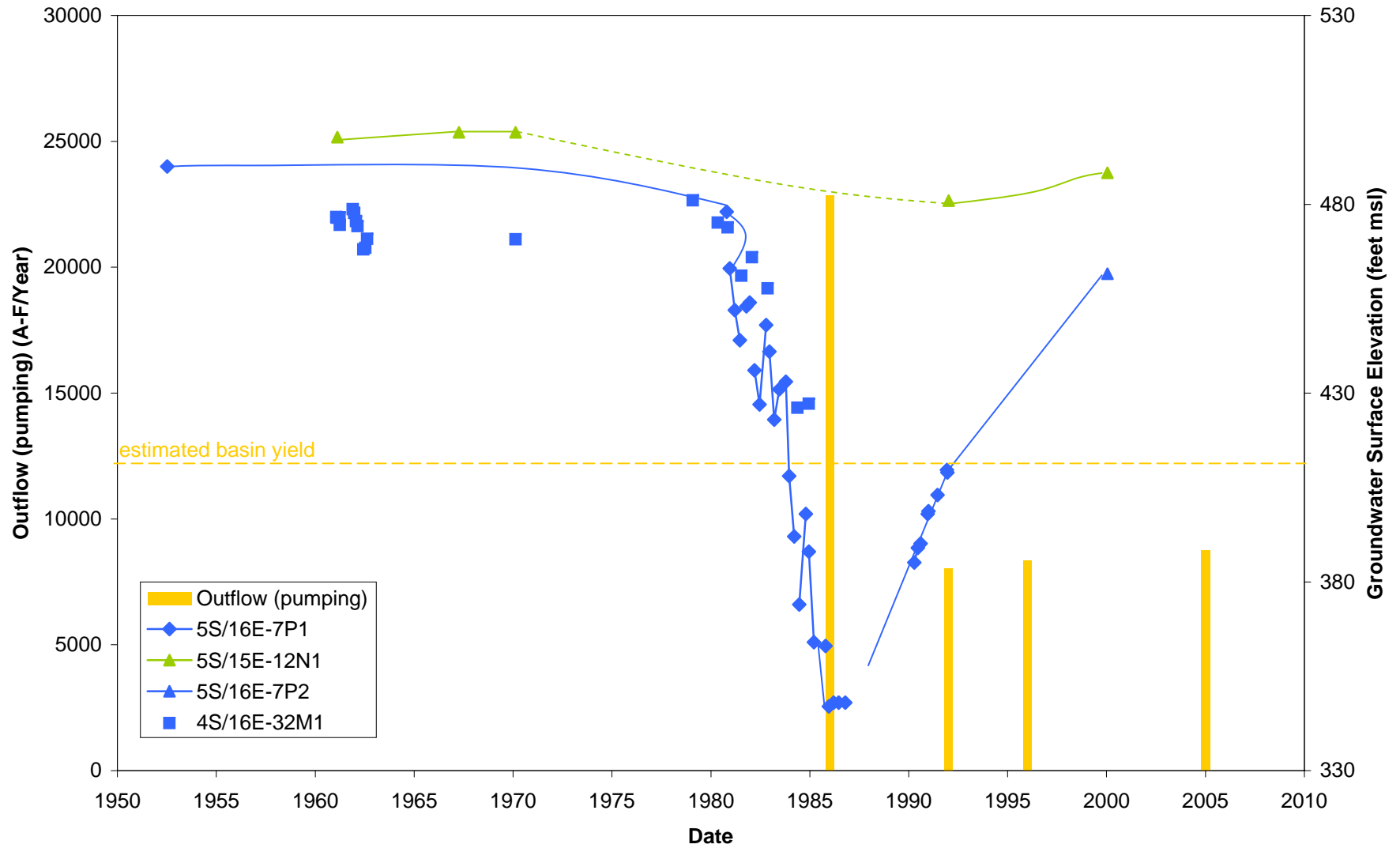
EAGLE CREST ENERGY COMPANY



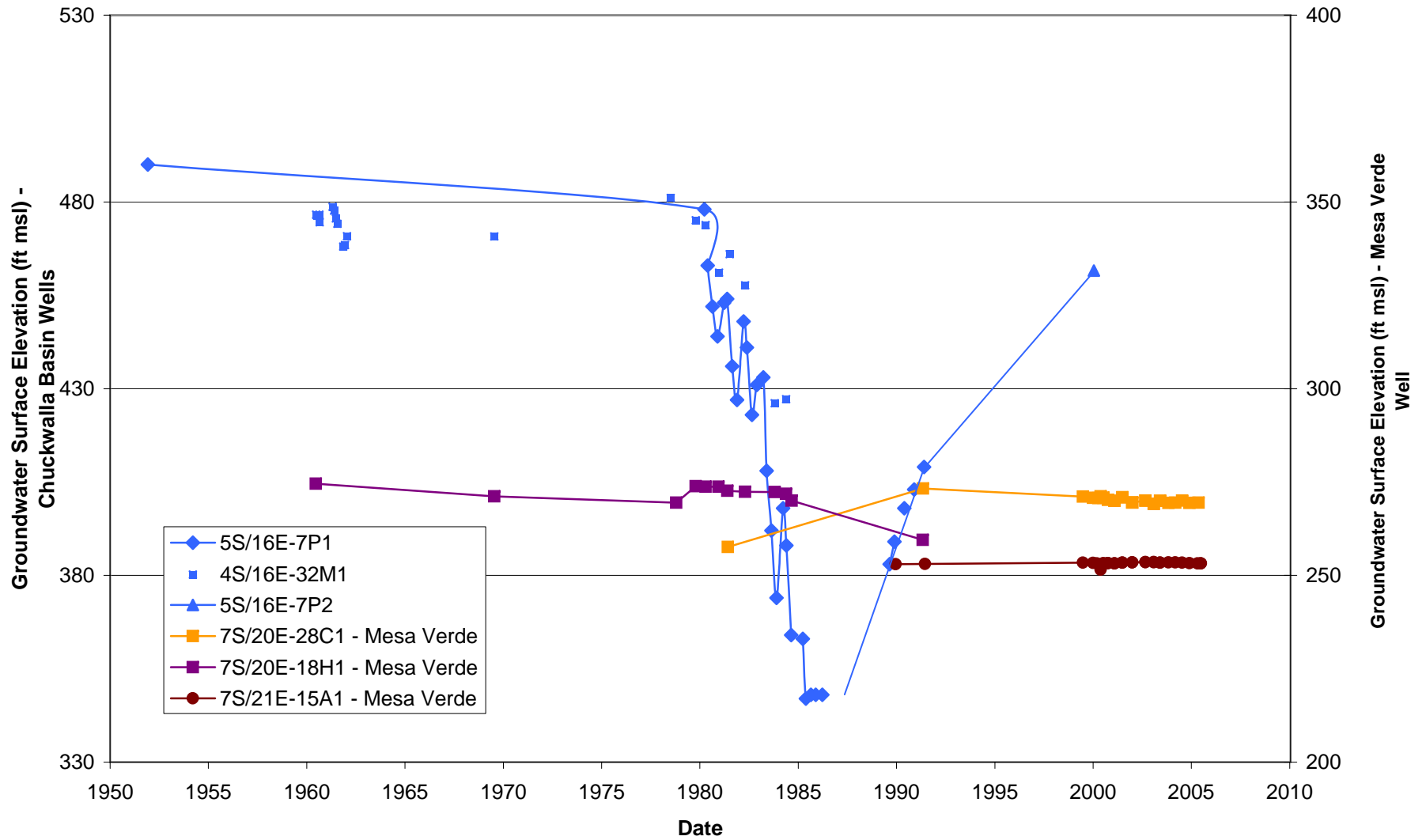
CROSS-SECTION C - C'

JUNE 2008 FIGURE E2-6

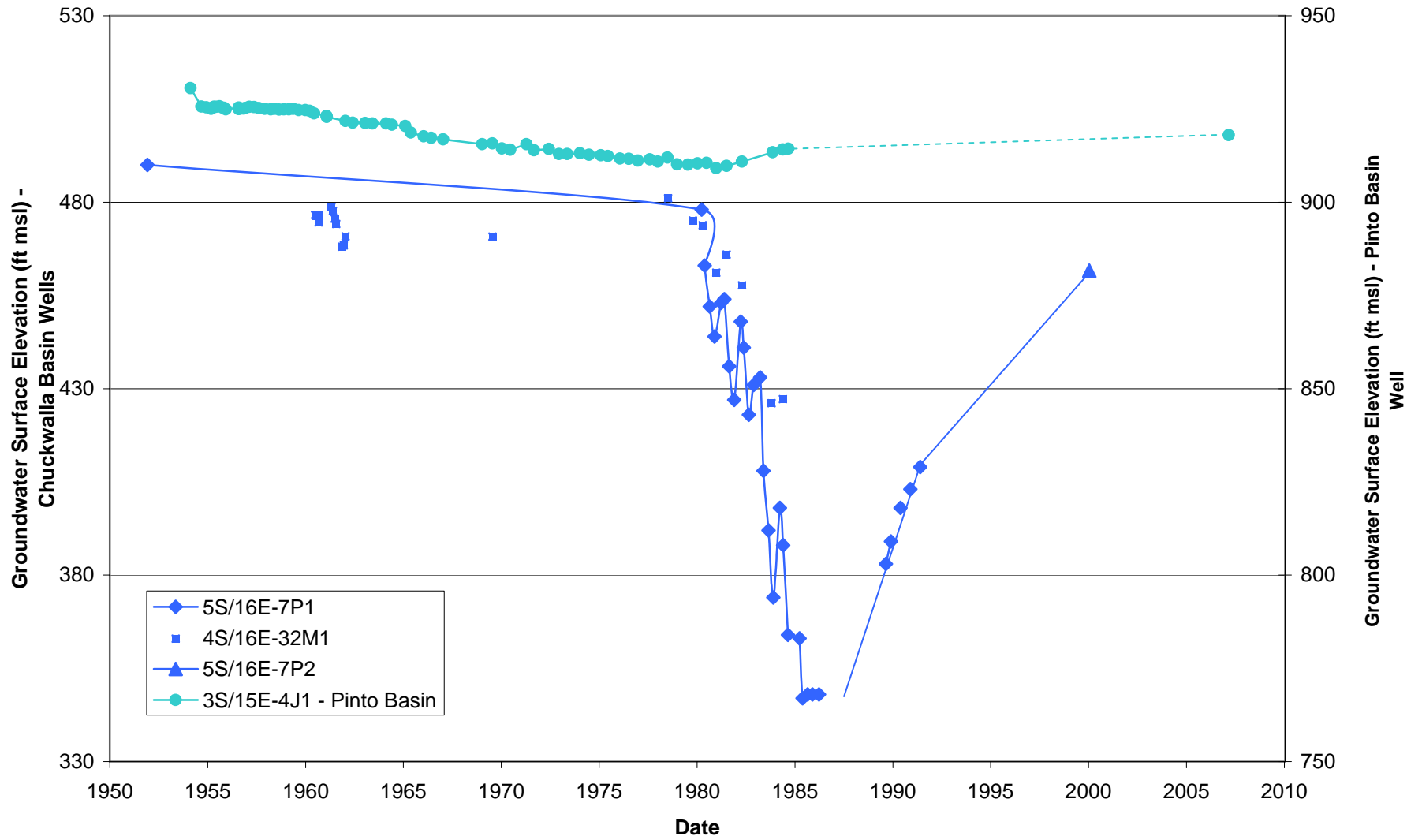
**FIGURE E2-7
UPPER CHUCKWALLA VALLEY GROUND WATER LEVELS**



**FIGURE E2-8
UPPER CHUCKWALLA VALLEY AND PALO VERDE MESA GROUND WATER LEVELS**



**FIGURE E2-9
UPPER CHUCKWALLA VALLEY AND PINTO VALLEY GROUND WATER LEVELS**



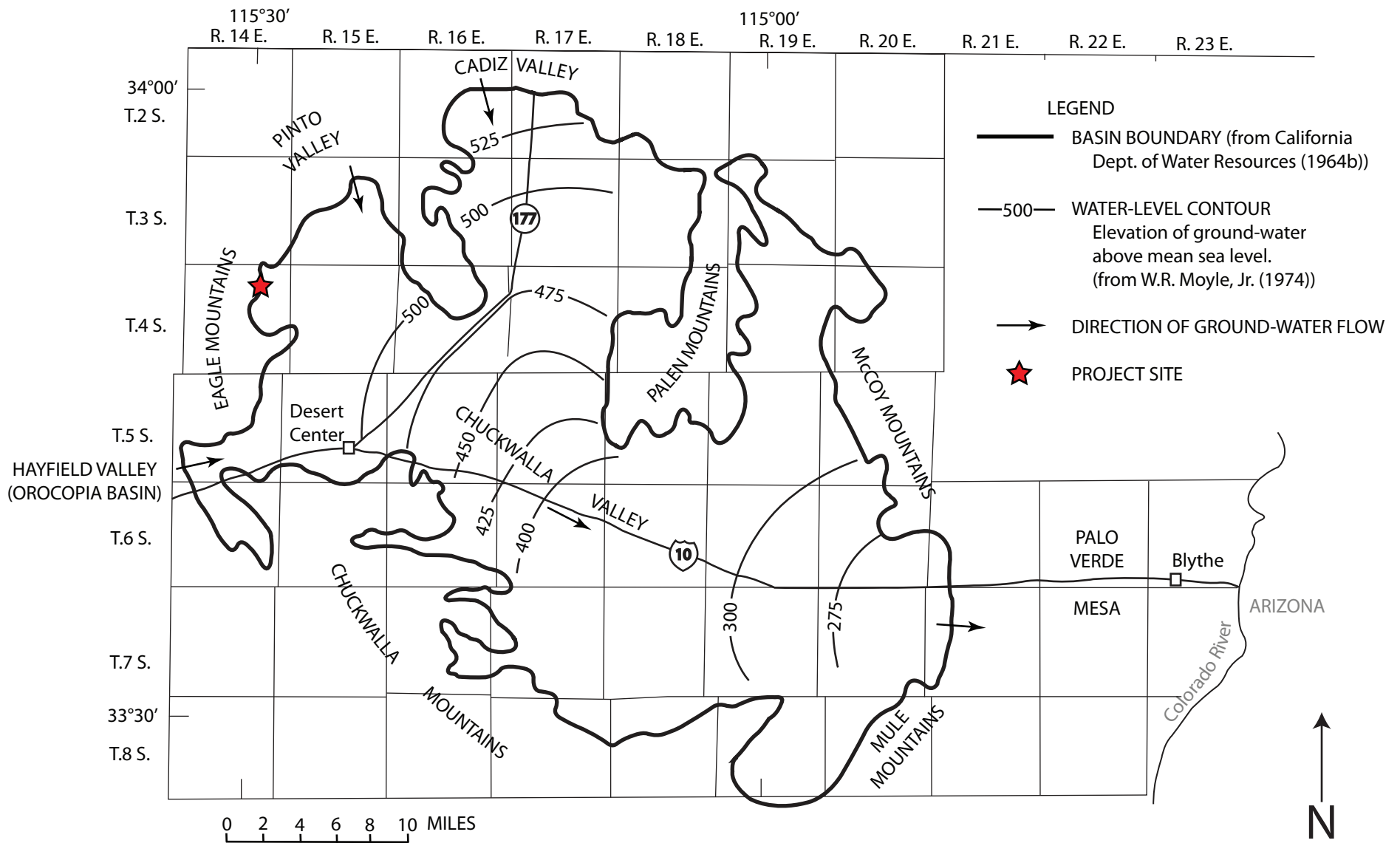


Figure modified from California Department of Water Resources Bulletin 91-24, Figure 7 (1979)

EAGLE MOUNTAIN PUMPED STORAGE
EAGLE MOUNTAIN, CALIFORNIA

EAGLE CREST ENERGY COMPANY



1974 GROUNDWATER CONTOURS USED
TO IDENTIFY REGIONAL FLOW DIRECTION

JUNE 2008

FIGURE E2-10